

National
Disability
Data Asset



National Disability Data Asset

What is the National Disability Data Asset?

An Easy Read summary

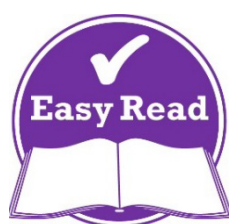


How to use this summary



The Australian Government Department of Social Services (DSS) wrote this summary for the National Disability Data Asset team.

When you see the word 'we', it means DSS.



We wrote this summary in an easy to read way.

We use pictures to explain some ideas.

Bold

We wrote some important words in **bold**.

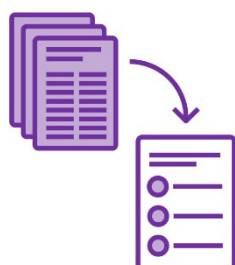
Not bold

This means the letters are thicker and darker.



We explain what these bold words mean.

There is a list of these words on page 18.



This is an Easy Read summary of another document.

This means it only includes the most important ideas.



You can ask for help to read this summary.

A friend, family member or support person may be able to help you.

What's in this summary?

What is the National Disability Data Asset? 4

How will we keep information safe? 7

How will we use the data asset? 9

What areas will the data asset focus on? 11

Who are we working with to create the data asset? 13

How did we test the data asset? 15

Word list 18

Contact us 20

What is the National Disability Data Asset?



The National Disability Data Asset is a new way to link **data** about people with disability.



When we talk about data, we mean:

- facts
- information
- records.



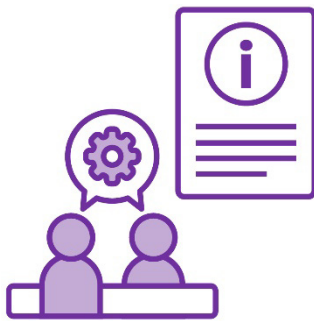
In this summary we call it the data asset.



The data asset will get the data from different parts of the government.



It will help us better understand the experiences of people with disability.



It will also give us more information about programs and services.

Who will the data asset support?



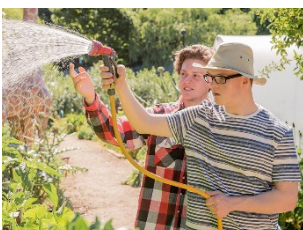
The data asset will be good for:

- people with disability
- their families and carers.

It will improve the way people with disability:



- receive services



- take part in the community.



The data asset will also help governments choose what services to spend money on.



And it will help them choose services that provide the best support for people with disability.



The data asset will also help researchers.

Researchers can use the data asset to understand the experiences of people with disability.



And they can share **evidence** from the data asset about what works best.

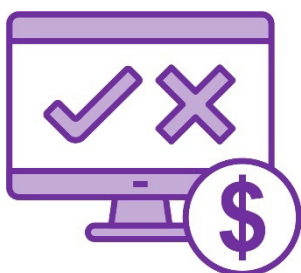
Evidence is proof something is true.

How will we keep information safe?



No one will be able to use the data to make decisions about a person's government **funding**.

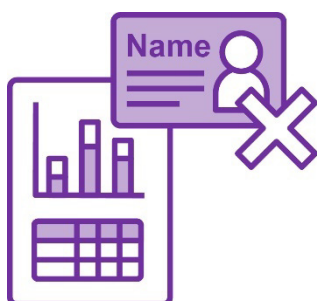
Funding is money to pay for supports and services.



Computers won't be able to use the data to make decisions about funding instead of people.



We will make sure we protect people's personal information.



To do this we will take personal information out of the data.

For example, people's names.



This means no one can find out:

- who people are
- how to contact them.



We will also protect:

- who can find and use the data
- how they can use the data.



As part of this, we will create rules so everyone:

- knows how people can use the data
- is comfortable with how people can use it.



We will make sure people follow these rules when they use the data.

We will work with people chosen by the disability community to do this.

How will we use the data asset?



The data asset will help us better support:

- people with disability
- their families and carers.



It will also give us a better idea of what programs and services people with disability use.

The data asset will help us share information about how we can:



- give people with disability more chances



- work towards better **outcomes** for people with disability.

Outcomes are important results we want for people with disability.

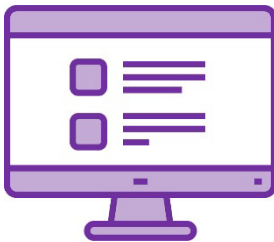


The data asset will also help governments make their services and supports better for people with disability.



And it will help us report on the goals in Australia's Disability Strategy.

This Strategy is a plan to support people with disability in all areas of their life.



You can find Easy Read information about the Strategy on the Disability Gateway website.

www.disabilitygateway.gov.au/ads/easy-read-strategy

What areas will the data asset focus on?



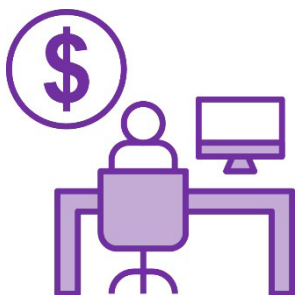
The data asset will start by focusing on 3 areas.



1. Reporting on outcomes for the Strategy



2. The health of people with disability



3. Working and earning money

In the future the data asset will also focus on other areas, including:



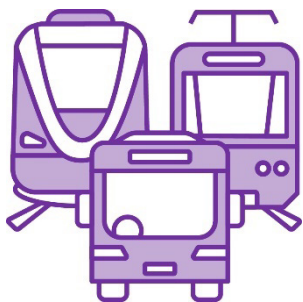
- early childhood



- school and education



- housing



- transport



- **justice systems.**

Justice systems include the police, law, courts and prisons.

Who are we working with to create the data asset?



We are working with 2 other parts of the Australian Government to create the data asset.

These are the:



- Australian Bureau of Statistics



- Australian Institute of Health and Welfare.

We also work with:



- state and territory governments



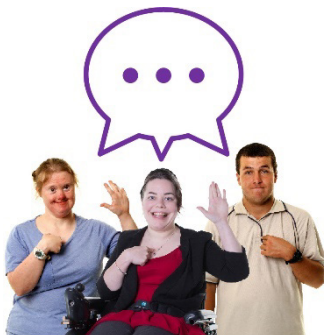
- the disability community.



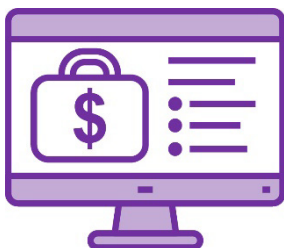
We will keep working with the disability community to make sure the data asset works well.



Their ideas are an important part of making sure the data asset works well.

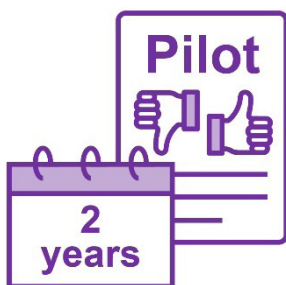


The disability community will also have a say in what we create using the data.



For example, we might use it to create a dashboard with data about finding and keeping jobs.

How did we test the data asset?



We spent 2 years testing how the data asset would work.

We call it the **Pilot**.



A pilot is a trial that helps us find out what:

- works well
- needs to be better.

The Pilot tested the best ways to:



- share data

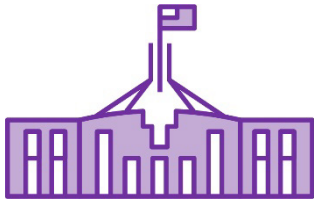


- link data



- find and use data.

5 governments worked together to run the Pilot:



- the Australian Government



- the New South Wales Government



- the Victorian Government



- the South Australian Government



- the Queensland Government.



The ACT Government also helped with the Pilot.



The Pilot showed us new information about people with disability.



For example, we learned more about young adults with disability who work full time in South Australia.

They earned 18% less than people without disability who worked full time.



This kind of information could help governments make this gap smaller.



You can find out what we learned from the Pilot on our website.

This includes Easy Read information.

www.ndda.gov.au

Word list

This list explains what the **bold** words in this document mean.



Data

When we talk about data, we mean:

- facts
- information
- records.



Evidence

Evidence is proof something is true.



Funding

Funding is money to pay for supports and services.



Justice systems

Justice systems include the police, law, courts and prisons.



Outcomes

Outcomes are important results we want for people with disability.



Pilot

A pilot is a trial that helps us find out what:

- works well
- needs to be better.

Contact us



If you want to find out more about the data asset, you can contact us.



You can visit our website.

www.ndda.gov.au



You can send us an email.

NDDA@dss.gov.au



The Information Access Group created this Easy Read document using stock photography and custom images. The images may not be reused without permission. For any enquiries about the images, please visit www.informationaccessgroup.com. Quote job number 5162-A.